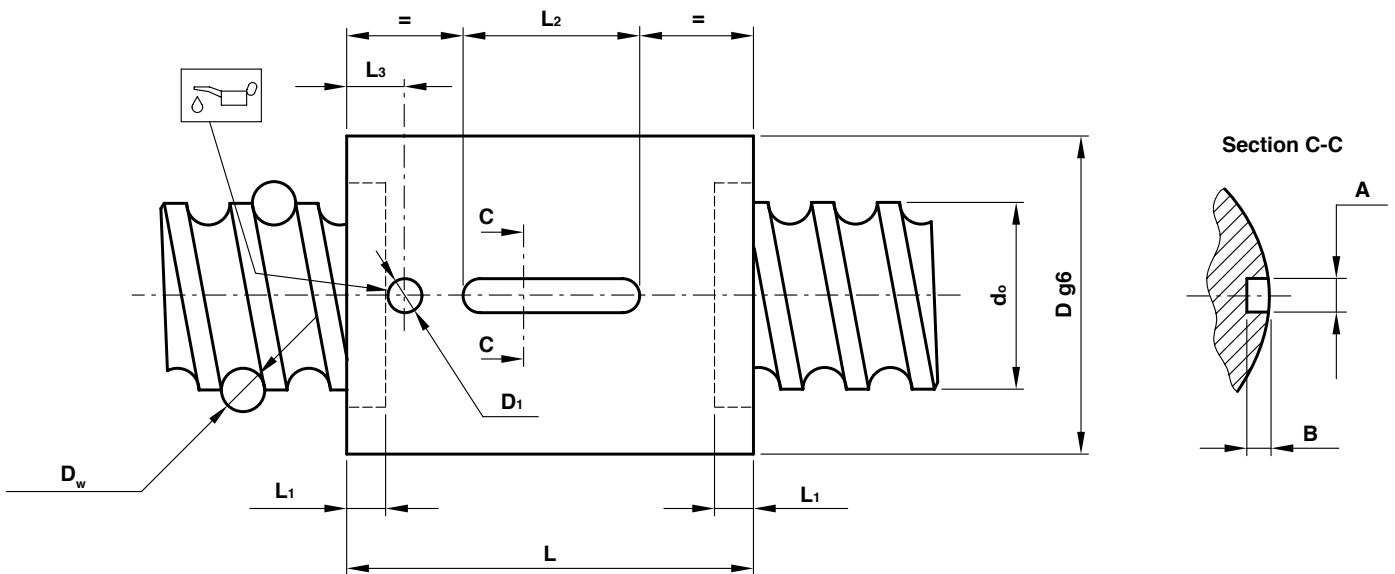


# SC | CYLINDRICAL SINGLE NUT FOR GROUND SCREWS AND ROLLED SCREWS

1

DIFFERENT PITCH AND DIMENSIONS ARE AVAILABLE UPON REQUEST. DIMENSIONS IN INCHES ARE ALSO AVAILABLE / \*NON-NORMALIZED TYPES

TYPE	$d_o$	$P_h$	$D_w$	N	D	$D_1$	L	$L_1$	$L_2$	$L_3$	A	B	C	$C_a$	$R_c$
SC1405	14	5	3,175	2	24	3	34	5	15	7	5	2,5	846	730	14
SC1605		5	3,175	3	28	3	38	5	15	7	5	2,5	1191	1160	21
SC1610	16	10	3,175	3	28	3	55	5	20	7	5	2,5	1191	1160	21
SC1616		16	3	2	33	4	49	5	16	9,5	5	2,5	887	783	16
SC2005	20	5	3,175	4	36	4	44	5	15	8	5	2,5	1985	1525	33
SC2505		5	3,175	4	40	4	44	5	15	8	5	2,5	2691	1626	40
SC2506		6	3,969	4	40	4	52	6	20	9	5	2,5	3105	2439	41
SC2510		10	4,762	4	40	4	75	8	30	11	5	2,5	3346	3242	40
SC2525	25	25	3,969	2	45	4	72	8	30	11	6	3	2383	1872	25
SC2525-2		25	3,969	2	40	4	70	7	30	10	6	3	2383	1872	25
SC2525-3		25	3,969	3	40	4	95	7	30	10	6	3	2940	2458	33
SC3205		5	3,175	4	50	4	44	5	15	8	6	3	3692	1747	50
SC3206		6	3,969	4	50	4	52	6	20	9	6	3	4221	2618	51
SC3210	32	10	6,35	4	50	4	85	10	30	13	6	3	5876	5254	51
SC3232-2		32	3,969	2	50	4	88	9	30	12	6	3	3233	2001	31
SC3232-3		32	3,969	3	50	4	120	9	30	12	6	3	4270	2642	41
SC4005		5	3,175	5	63	4	48	5	20	8	8	3,5	5722	2204	71
SC4010	40	10	6,35	5	63	4	95	10	40	13	8	3,5	9377	6611	75
SC4040		40	6,35	2	70	4	100	7	40	13	8	3,5	4875	3437	39
SC5010		10	6,35	5	75	4	95	10	40	13	8	3,5	12714	7050	92
SC5050	50	50	6,35	2	80	4	120	7	40	13	8	3,5	6610	3665	48



- N Nr of ball screw revolutions
- H Flange type
- $d_o$  Major diameter (mm)
- $P_h$  Pitch (mm)
- $D_w$  Ball diameter (mm)
- $C_o$  Static load capacity (daN)
- $C_a$  Dynamic load capacity (daN)
- $R_c$  Nut rigidity (daN/ $\mu$ m)

**OFFICINA MECCANICA B.B.**  
WWW.OFFICINAMECCANICABB.COM

